

The logo for SELRACK, featuring the word "SELRACK" in a bold, white, sans-serif font. The letter "S" is stylized with a blue and orange gradient.

Electronic
Packaging
Solutions



SELRACK



SELRACK

Selrack Electronic Enclosures Pvt. Ltd., is a full-fledged manufacturer of high quality packaging systems for electronics since 1993. Spearheaded by a board of professionally qualified people with sound technical and managerial experience, and complemented with a skilled and motivated workforce, Selrack has emerged as a predominant player in this industry today. Strategically located in the

electronics zone in Navi Mumbai, the factory is well equipped with basic fabrication facilities and state of the art machinery like CNC Press Brake and Shear. Starting



CNC Press Brake



Hydraulic Shearing Machine

from digitised designing of components, metal parts, panels and profiles to powder coated finished products, Selrack ensures total solutions for customer needs. Result, a highly satisfied creme de la creme clientele.



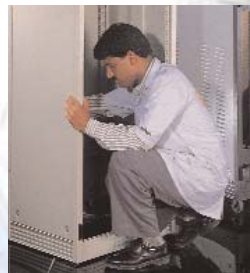
Designing on CAD



Cabinet Assembly

The products range from Networking Enclosures and Cabinets, 19" Racks & Cabinets, PC Cabinets, Server Racks, General Purpose Cabinets, Studio Equipment Racks to 19" Subracks (Card Frames) and a host of other accessories. Not to mention custom-made solutions as well.

Packaging solutions for Networking, Telecommunications, IT and Industrial Electronics are the focus areas. And these encompass a wide range of enclosures and housings for data communication with adequate choice of sizes and extensive accessories range. Understanding customer requirements and a dedicated approach to quality management are key factors of Selrack's success.



Final Inspection & QC

NC98DR 19" Data Racks



SUPPLY INCLUDES

Basic heavy duty aluminium frame
Finished in moonlight and dark grey powder texture
Fixed base with mounting holes for fastening down (if needed)

ACCESSORIES

- Cantilever shelves
- Keyboard sliding tray
- Cable managers
- AC mains channel
- Captive mounting hardware
- Adjustable screw legs
- Castors

APPLICATIONS

- Research institutes • Educational institutes
- Laboratories • Networking

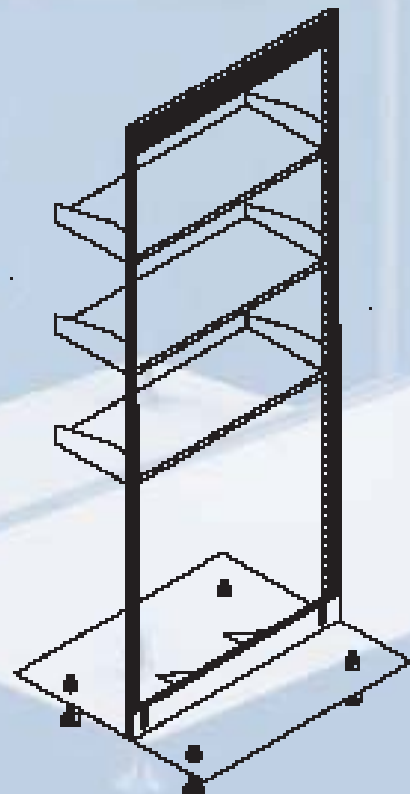
A simple solution for networking or laboratory applications. Quick and easy all round access to the inside equipment is its key feature. Heavy duty aluminium sections with sturdy base makes it the ideal choice for housing heavy equipment load.

Note : Load carrying capacity is influenced by the distribution of the load. However, loads of 400kg suitably distributed could be considered safe.

SIZES

Height 24U, 27U, 32U, 36U, 42U, 45U

Width 545mm





Wall mounting cabinets specially designed for smaller networks and structured cabling components. Available in single or hinged double units.

SUPPLY INCLUDES

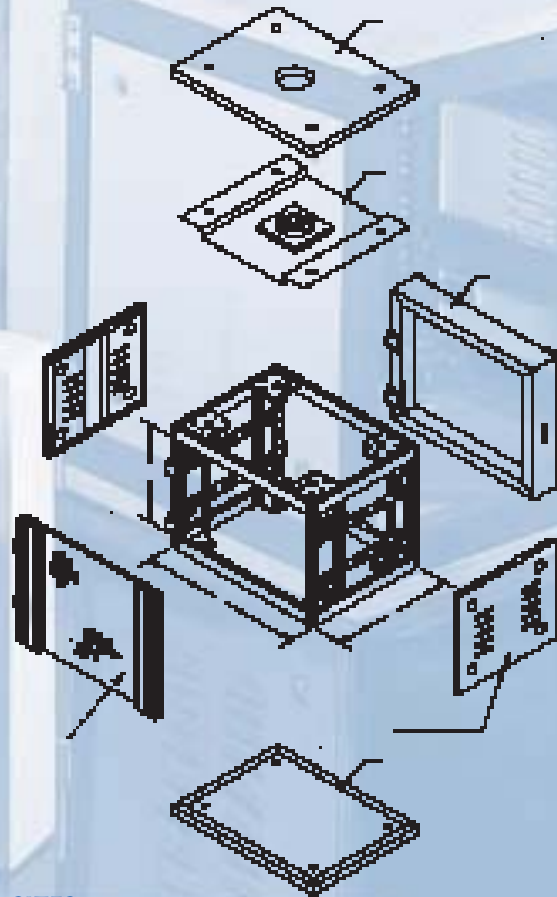
- Basic light duty aluminium frame
- Front acrylic door with lock
- Side panels louvered
- Top cover & fan plate with fans for cabinet cooling
- Bottom cover
- Recessed 19" mounting angles
- Wall mounting brackets
- Cable entry provision from top & bottom
- Finished in moonlight and dark grey powder texture

ACCESSORIES

- Horizontal stationary shelves
- Cantilever shelves
- Cable managers
- AC mains channel
- Equipment support angles
- Captive mounting hardware
- Earthing kit

APPLICATIONS

- Banks • Corporate offices
- Campus networks • Software technology parks



SIZES

Height	6U, 9U, 12U, 15U
Width	600mm
Depth	450mm for single unit and 550mm for double unit

NC98FS Networking Cabinets

Floor standing Networking Cabinets combine aesthetic designs and robust construction to accommodate standard networking equipment and structured cabling components. Ideal for campus networks and software technology parks.

SUPPLY INCLUDES

Basic heavy duty aluminium frame
Front acrylic door of full height with lock
Rear M.S. door of full height with lock
Side panels louvered upto 1/3 height
Top cover & fan plate with fans for cabinet cooling
Recessed 19" mounting angles
Set of heavy duty castors
Cable entry provision from top & bottom
Finished in moonlight and dark grey powder texture

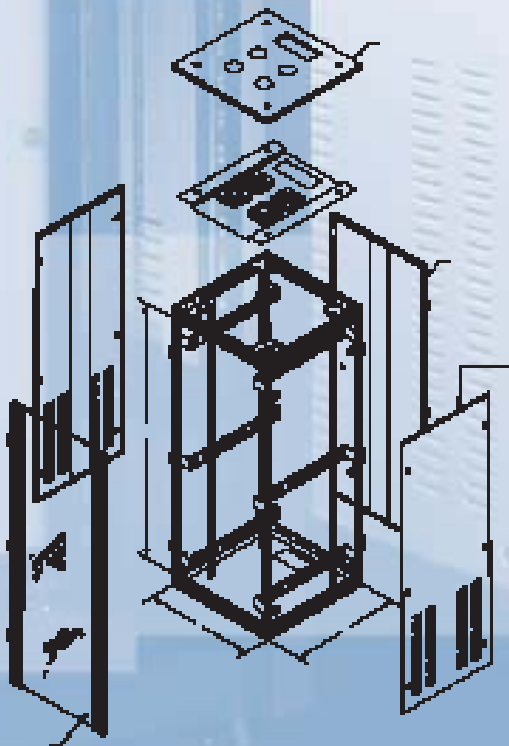
ACCESSORIES

- Horizontal stationary shelves
- Horizontal sliding shelves
- Cantilever shelves
- Keyboard sliding tray
- Cable managers
- Vertical cable trays

- PVC cable ducts
- AC mains channel
- Equipment support angles
- Fan modules
- Captive mounting hardware
- Earthing kit
- Adjustable screw legs
- M.S. base frame

APPLICATIONS

- Banks • IT • Corporate houses • Major hotels
- Hospital complexes • Financial institutions
- Educational & Research institutes • Airlines
- Stock exchanges • Transport / Utility
- Consultancy firms • Construction firms



SIZES

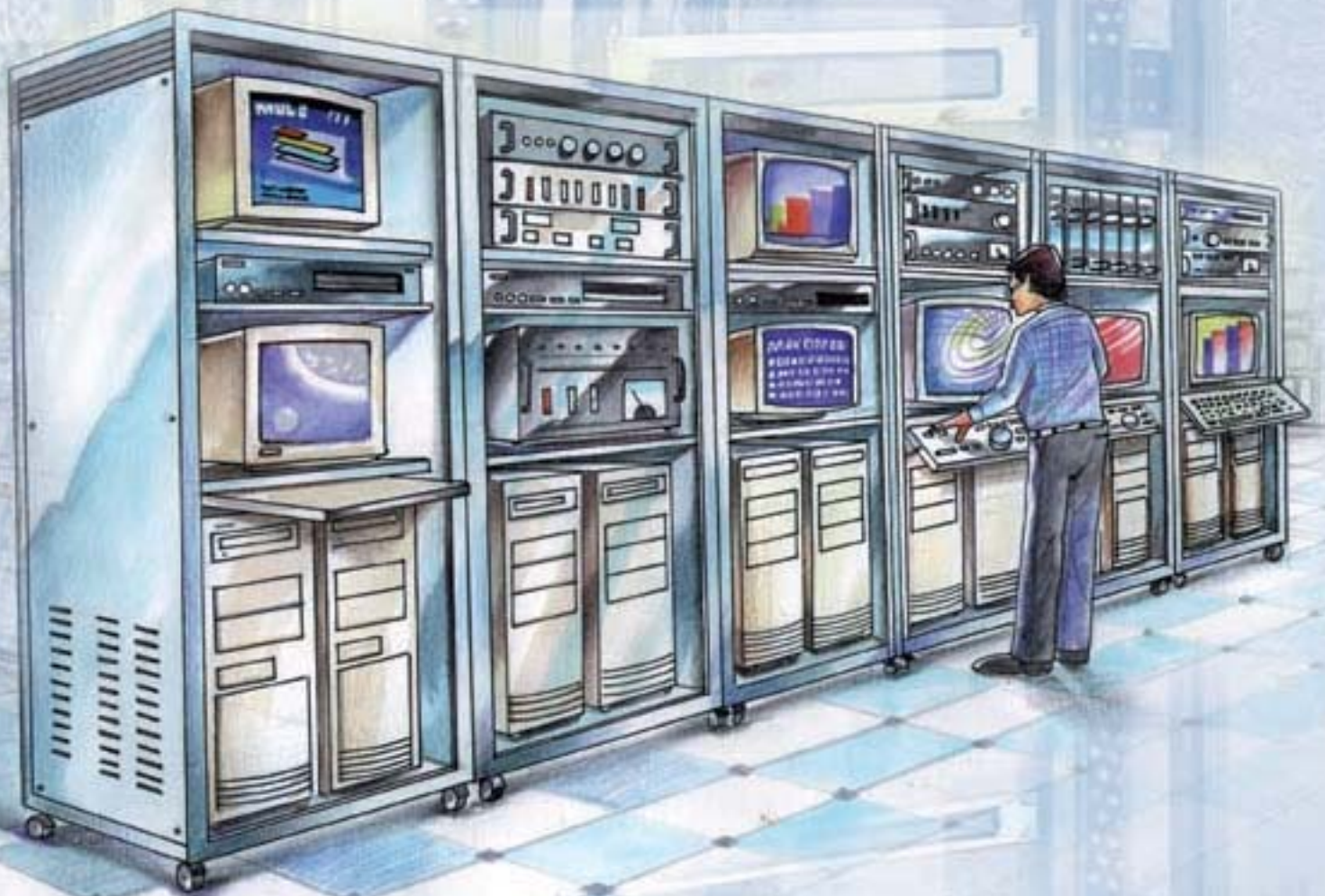
Height 17U, 22U, 24U, 27U, 30U, 32U, 36U, 39U, 42U

Width 600mm and 800mm

Depth 600mm and 800mm

NC98SR Server Racks

Specially designed for IT applications in networking for server and EDP rooms. It can accommodate server units, data storage systems, monitors, etc. conveniently. Ease of maintenance and protection to sensitive equipment are standard features. Available in 2/3/4 server configurations. Can also be customised for individual applications.



FEATURES

Frame made of specially designed aluminium extrusions and powder coated dark grey
Telescopic retractable server trays on castors
Fixed shelves for monitors and PCs
Moulded keyboard trays on telescopic slides with lockable option.
Panels made of sheet steel and powder coated moonlight grey
Compatible with HCL, IBM, COMPAQ or any other servers
Compatible with 14", 15", 17" monitors of any make
Provision for mounting UPS

ACCESSORIES

- Rear M.S. door with lock
- Front perspex door with lock
- Cooling fans at the top
- A. C. mains channel
- Castors with brake
- Telescopic writing desk
- Modem shelf
- UTP cable termination box
- Cable channel
- Captive mounting hardware.

APPLICATIONS

- Banks • Financial institutions • Corporate offices
- Travel houses • Hotels • Recording studios
- Research institutes



SIZES

Height 42U, 36U, 24U

Width 665mm, 800mm

Depth 800mm, 900mm

ERS19 19" Cabinets

SUPPLY INCLUDES

- Basic heavy duty aluminium frame
- Side panels louvered/plain
- Top cover
- Base plate
- Adjustable screw legs

ACCESSORIES

- Horizontal stationary shelves
- Horizontal sliding shelves
- PVC cable ducts
- AC mains channel
- Fan modules
- Earthing kit
- Captive mounting hardware

APPLICATIONS

- Telecom basic & cellular services • VSAT
- Paging services • Mobile monitoring vans
- Industrial automation and control
- Power electronics • Railway signalling

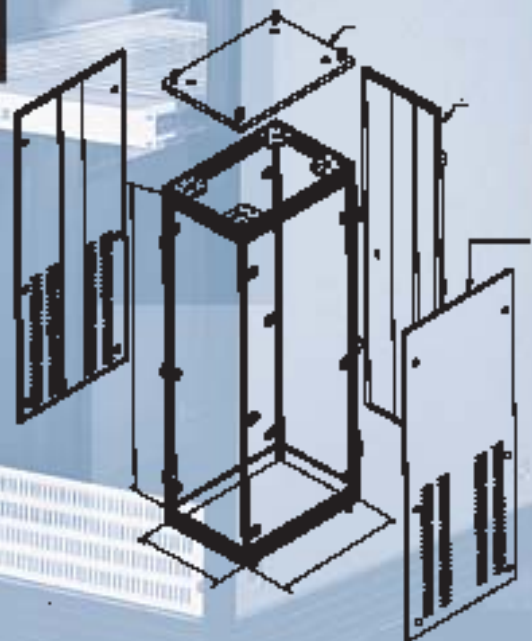
Engineered with structural integrity, these cabinets will suit myriad applications. Conforming to DIN 41494 standards, Selrack's ERS-19 cabinets are designed for housing Chassis, Card frames, Subracks, 19" mounting instruments. Custom-made enclosures are also offered.

With a comprehensive line of accessories, these cabinets are a cost effective solution.

CONSTRUCTION

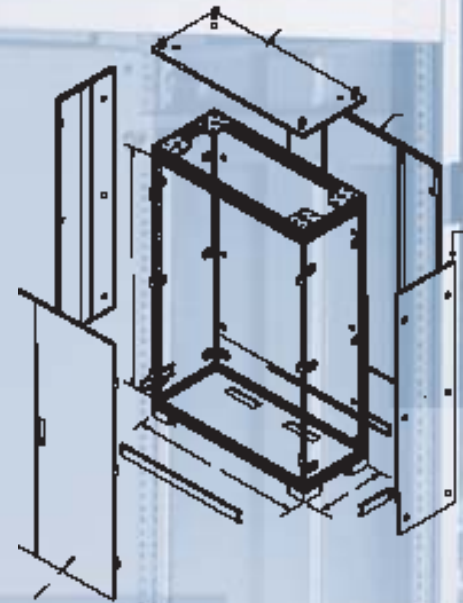
The ERS-19 is shipped fully assembled and consists of horizontal width/depth and vertical aluminium extrusions. The side panels and doors made of 18SWG sheet steel can be easily removed thus providing maximum accessibility to the electronics inside.

These cabinets are lightweight, but still provide extraordinary stability and high load carrying capability upto 500kg. The frame is powder coated in black matt colour and panels & doors in President blue.



SIZES

Height	100, 150, 200, 240, 26U, 32U, 36U, 39U, 42U, 46U
Width	545mm
Depth	400mm, 600mm, 680mm, 800mm



A general purpose switchgear and electronics enclosure system with detachable panels for easy access and mounting of bulky equipment. It also features a three point locking system and provides scope for expansion with additional baying. Ideal for Production shops, Telecom sector and Fibre optic node housings.

MATERIAL OF CONSTRUCTION

Frame of the cabinet is made of heavy duty aluminium extrusions which ensure rigidity and precision, and also reduce the weight of the panel.

Front door	: Sheet steel 2.0 mm
Rear panel	: Sheet steel 2.0 mm
Side & Top panels	: Sheet steel 2.0 mm
Equipment mounting plate	: Sheet steel 3.0 mm

SUPPLY INCLUDES

- Basic enclosure frame work
- Rear panel / Rear door
- Top cover / Top canopy
- Front door (Single) with R.H.S. / L.H.S. hinge option
- Front double door with locking door on R.H.S.
- 4 nos. eye bolts

Base plinth with detachable front & side to facilitate access from bottom

FINISH

The entire cabinet is powder coated to RAL 7032 structure finish after undergoing seven tank pre-treatment, phosphating and oven baking for excellent durability.

ACCESSORIES

- The equipment mounting plate is available in two parts as an option for easy handling
- Support channels for installation of additional equipment
- 19" mounting arrangement for accommodating all
- 19" chassis & accessories
- Earthing kit

APPLICATIONS

- Control & Switchgear
- Shelters for telecom • SCADA

SIZES

Height	1600mm, 1800mm, 2000mm, 2200mm
Width	600mm, 800mm, 1000mm, 1200mm, 1400mm, 1800mm
Depth	400mm, 600mm, 800mm



HORIZONTAL A. C. MAINS CHANNEL

Horizontal socket channels consist of 15A main switch, indicator lamp and 6 nos. 5A sockets, 1.5 M lead and plug. Also available with RFI/EMI filters and surge suppressors.



VERTICAL A. C. MAINS CHANNEL

Vertical socket channels are available with 8, 10 or 12 mains outlets. Also available with RFI/EMI filters and surge suppressors.

FAN MODULES

These fan trays are suitable for use in racks. They are available in 1U & 2U heights and three depths suitable for mounting 2, 4 or 6 fans of 90 CFM capacity.



FAN PLATE

Fan plate is available in 1/2/4/6 fan configurations and permits fan mounting without compromising on vertical usable space.

COOLING FANS

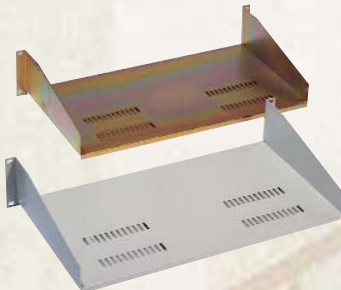
Available in 90 CFM & 250 CFM capacities for local cooling of critical loads and cabinet ventilation.



LOUVRE MODULES

Louvre modules are to enable additional ventilation particularly in crowded cabinets. These modules are of 2U height and conform to 19" mounting.





CANTILEVER SHELF

Standard Cantilever Shelves are designed to carry evenly distributed loads of upto 30 kg. All trays are vented and finished to zinc and yellow passivate or powder coated moonlight grey.

Sizes : 2U / 255mmD, 2U / 400mmD

FLAT STATIONARY SHELF

Available for 600, 680 & 800 mm depth cabinets.
Load carrying capacity: Upto 50 kg (evenly distributed).
Finish: Zinc plated or powder coated.

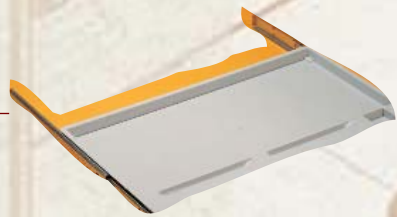


TELESCOPIC SHELF

Used for non - 19" equipment for access from all sides.
Available for 600, 680 & 800 mm depth cabinets.
Finish: Zinc plated or powder coated.

KEYBOARD DRAWER

Telescopic keyboard drawers find special use in networking and server racks. They are elegantly styled and come in lockable and non-lockable options.



EQUIPMENT SUPPORT ANGLES

These angles are used to provide support for heavy equipment that comes with front mounting only and very important when the equipment has frequent removal on site.

GENERAL PURPOSE BRACKETS

Add-on general purpose brackets are available for mounting of A.C. mains channel, UTP termination boxes, etc. They are provided with pre-punched slots for convenience of mounting any structured cabling components on site.



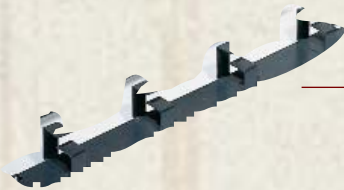


WALL MOUNTING BRACKETS

These are made from 6mm sheet steel and can safely support all NC98WM series wall mount enclosures.

CABLE TRAYS

These cable trays provide a traceable wire management system and they are also used in conjunction with horizontal cable managers. Available in 50mm, 100mm and 150mm widths. Finish: Zinc plated or powder coated.

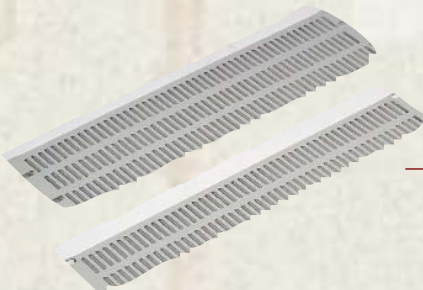


HORIZONTAL CABLE MANAGER

These are available in 1U & 2U heights and are designed to provide cable support and distribution for use with patch panels etc.

PVC CABLE DUCTS

These have similar application to cable trays. Cables are retained inside ducting by snap on cover and exit from ducting through the slots provided.



VENT PANELS

Available in 1U, 2U and 3U sizes, these panels are intended to be used between heat generating equipment to assist air flow. Standard colour is black; however other colours can be specified.

CABLE ENTRY PANELS

These are specially designed for NC98FS & NC98WM to protect cables from any possible damage during entry and re-entry inside the enclosure.



BLANK PANELS

These aluminium panels are available from 1U to 12U sizes and are specially used to blank odd spaces left in between the equipment.

EARTHING KIT

Earthing kit comprises of an earthing bar, panel studs and flexible braided wire straps to achieve earth continuity in the cabinet.



CABLE TERMINATION BOX

These are used for terminating UTP, CoAx and ScTp cables inside the server racks and networking racks.

LIGHT INTERFACE UNIT (LIU)

These units are used in networking applications for termination of fibre optic cables.



CASTORS

These castor wheels are available in sets of four and can take a total weight of 400 kgs. Castors mounted in front of cabinets are with brakes and those at rear are without brakes. The use of castors facilitates easy shifting of cabinets inside the office / shopfloor.

SCREW LEGS

These screw legs with M12 threads are useful for leveling of equipment placed on uneven floors or for jacking-up castor mounted units.



BASE FRAME

Suitable for heavy duty applications where cabinet has to be grouted to the floor. Access for cable entry provided on all sides by means of removable trims.

LIFTING BOLTS

Made of cold forged steel, these lifting bolts are rated for 400 kgs. These are recommended with ERS-19 & GPC-98 cabinets only.



CAPTIVE MOUNTING HARDWARE

Comprises of M6 cage nut, M6 x 20 screw and a plastic decorative cap. They are supplied in a pack of 20.



The logo for SELRACK, featuring the word "SELRACK" in a bold, white, sans-serif font. The letter "S" is stylized with an orange horizontal bar above its top curve. The background of the entire page is a dark blue gradient with a faint, glowing grid pattern and binary code (0s and 1s) scattered throughout, suggesting a digital or network environment.

SELRACK

ELECTRONIC ENCLOSURES PVT. LTD.

Office: 17-C, Electronic Sadan-1, MIDC, T.T.C., Electronic Zone
Mahape, Navi Mumbai-400 701

Tel: 91-22-768 8833. Telefax: 91-22-768 4875

Website: www.selrack.com E-mail: selrack@vsnl.com

Works: A-237, MIDC, Mahape, Navi Mumbai-400701